



Inventory Pro

Efficient Inventory Management Solution

Give your business a competitive edge

Today more than ever businesses are focusing on Improvements in the Inventory Control Process as ways of reducing costs. The reduction of inventory levels is seen as a key element of this process. However as stock levels are reduced another problem becomes clear; knowing what is in stock is no longer enough. Businesses need to know where that stock is located, what has been allocated and what is available to promise. Furthermore the demand to utilize bar code technology and hand held devices in the warehouse is growing at a ferocious pace.

Inventory Pro from CitiXsys delivers a host of features that enhance the entire Inventory Management process. Increased automation and item tracking capabilities in Inventory Pro help you improve inventory accuracy and better match the goods you have on hand with customer demand.

Overview

Inventory Pro enhances the core SAP Business One inventory management capabilities, extending the following functionalities:

- ✓ Multiple Units of Measure
- ✓ Available to Promise (ATP)
- ✓ Bin Management
- ✓ Inventory Allocation
- ✓ Warehouse operations with RF Handheld devices
- ✓ Integration with shipping carriers

Multiple Units of Measure

Businesses often transact an item in more than one unit of measure. The Multiple Units of Measure feature in Inventory Pro extends the core SAP Business One capability beyond a single unit of measure. The Multiple Units of Measure feature enables you to define more than one unit of measure (Alternate Units of Measure) for items and transact in these alternate units of measures in SAP Business One marketing documents.

Available to Promise

The Available to Promise feature in Inventory Pro delivers fast access to vital inventory information including current and future positions to help you make effective use of inventory, improve service and keep firm delivery promises. This feature enables the user to commit a delivery date to the customer at the point of order. The planned delivery date is calculated using a number of variables even when there is no stock to allocate.

Bin Management

Just knowing how much inventory exists in a warehouse may not be sufficient. It is essential to track inventory within a warehouse. The Multi Bin feature in Inventory Pro allows the users to define the warehouse layout and create Bin locations. Items can be stored in individual or multiple bins and a bin can contain multiple items. This inventory tracking capability allows the user to effectively manage inventory Put-Away and Order picking thereby optimizing processes and the use of space.

Inventory Allocation

Committing stock to customer orders or internal production orders helps in better decision-making and inventory control. The Inventory Allocations feature enables the user to reserve stock for outgoing orders at the point of goods receipt or from the existing free stock. Using the Order Management interface in Inventory Pro you can process several orders at once and generate pick tickets which directs workers to the exact zones and bins from where they must pick.

Warehouse operations with RF Handheld devices

The RF module in Inventory Pro allows warehouse activities such as goods receipt; put away, picking, packing and dispatch as well as cycle counting to be transacted through Radio Frequency handheld devices in the warehouse. The use of Bar Code scanners helps to reduce errors and improves productivity in the warehouse.

Integration with shipping carriers

Employees from different departments enter the same information into different, and sometimes incompatible, programs or systems, wasting time and increasing the chance of error. Inventory Pro bridges this gap by providing seamless integration with applications from shipping carriers such as UPS – World Ship.



Business Benefits

Visibility of Stock

The Bin Locations feature enables better stock management throughout the entire Inventory Control Process. The availability and location of items is readily visible to all warehouse employees.

Improve customer service

The available to promise feature has been designed to ensure that stock out situations are minimized by enabling the sales staff to commit delivery dates based on available stock, existing commitments and stock availability in the future.

Simplistic and Efficient Order Management

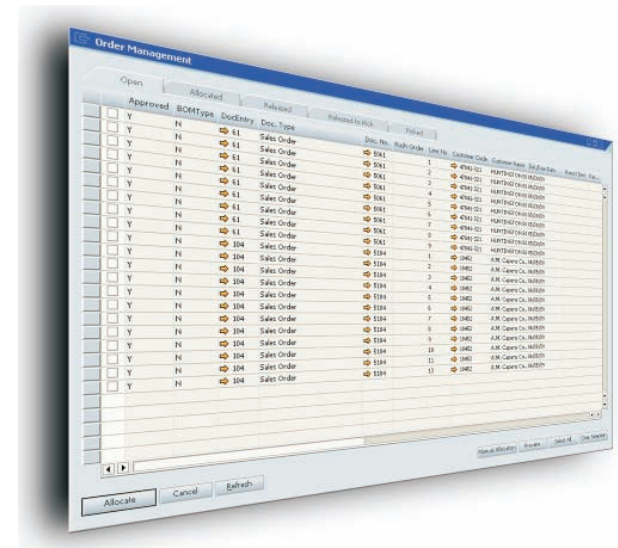
The Order Management feature in Inventory Pro provides a unified interface to allocate customer / production orders, create pick tickets for allocated orders, confirm and post picking transactions and finally create deliveries.

Reduce Operations cost and increase efficiency

Drive costs out of each warehouse operation with the use of Radio Frequency Handheld devices and barcode scanning technology. With the power of Inventory Pro on a wireless handheld device, warehouse operators can carry out paperless operations for Purchase Order Goods Receipts, Put Away, Stock Take, Picking and Packing.

Reduced dependency on warehouse personnel

Inventory Pro facilitates standardization of allocation methods, inventory movements, picking methods, and inventory locations. This standardization helps to minimize reliance on informal practices, resulting in reduced training costs and lower error rates.



Stock Accuracy

Cycle counting allows you to perform counting of physical inventory in an efficient way, with little disruption to your warehouse operations. Cycle counts not only can improve the accuracy of inventory records for planning purposes, but also can eliminate or reduce the need for complete, costly physical inventories.

Synchronized Operations

Sales department can make firm commitments, Warehouse Operators can easily locate stock and the purchase department can manage optimum stock levels thereby reducing the inventory holding cost.

Streamlined Delivery Shipments

Seamless integration with shipping carriers streamlines the outbound delivery process.

Quick Facts

Feature	Operation	Functionality
Multiple Units of Measure	Master Data Management	<ul style="list-style-type: none"> ✓ Define multiple alternate units of measure for each item ✓ Maintain price lists for alternate units of measure ✓ Extend special pricing for alternate units of measure
	Sales and Purchase Transactions	<ul style="list-style-type: none"> ✓ Create marketing documents in alternate units of measure
Available to Promise (ATP)	Sales Order Management	<ul style="list-style-type: none"> ✓ Determine the earliest available date for the ordered quantity ✓ Determine ATP quantity on the desired delivery date ✓ View detailed ATP report ✓ Consider holidays in ATP calculations
Inventory Allocations	Sales and Production Order Management	<ul style="list-style-type: none"> ✓ Reserve inventory at Bin level (Hard Allocation) or at Warehouse level (Soft Allocation) ✓ Multiple Allocation methods: <ul style="list-style-type: none"> • FIFO • LIFO • Zone Preference ✓ Block allocation of partial quantities ✓ Block allocation of un-approved orders
	Goods Receipt PO	<ul style="list-style-type: none"> ✓ Back Order Allocation
Multi – Bin	Inventory Management	<ul style="list-style-type: none"> ✓ Multi-Zone Warehousing ✓ Serial and Batch tracking ✓ Real-time visibility of stock ✓ Define default location per item ✓ Multiple storage locations per item ✓ Relocation of stock within the warehouse (Intra-warehouse Bin movement) ✓ Stock take within Bins and inventory reconciliation
	Inventory Receipt	<ul style="list-style-type: none"> ✓ Inventory Put-Away ✓ Put-Away Wizard ✓ Label printing



Feature	Operation	Functionality
Multi – Bin	Order Management	<ul style="list-style-type: none"> ✓ Sales and Production order management ✓ Order / Customer priority ✓ Automatic / Manual Allocation ✓ Pick ticket: <ul style="list-style-type: none"> • Customer wise • Zone wise • Item Wise ✓ Automatic pick ticket printing ✓ Assign pick tickets to pickers
	Picking	<ul style="list-style-type: none"> ✓ Order / Independent picking ✓ Picking wizard ✓ Wave picking
Shipping Integration	Delivery Shipment	<ul style="list-style-type: none"> ✓ Integration with UPS World Ship
Radio Frequency Handheld based operations	Warehouse Operations	<ul style="list-style-type: none"> ✓ Purchase Order goods receipt ✓ Inventory Put-away ✓ Paperless picking ✓ Pack to carton

*Inventory Pro Enhanced and Optimized
Inventory Management for SAP® Business
One*



Contact us:

USA - New York

Rockefeller Center, 7th Floor
1230 Avenue of the Americas
New York, Ny 10020
USA
T: 1 212 745 1365
F: 1 646 349 3441
E: newyork@citixsys.com

Asia Pacific - Sydney

Tower 2, Level 20
201 Sussex Street
Sydney NSW 2000
Australia
T: 61 2 9006 1616
F: 61 2 9006 1515
E: sydney@citixsys.com

EMEA - London

Lakeside House
1 Furzeground Way, Stockley Park
Uxbridge UB11 1BD
United Kingdom
T: 44 0 208 622 3006
F: 44 0 845 280 8848
E: london@citixsys.com

USA - Chicago

The Merc, West Loop, 22nd Floor
30 South Wacker Drive
Chicago, IL 60606
USA
T: 1 630 359 5956
F: 1 630 303 9706
E: chicago@citixsys.com

Asia Pacific - Melbourne

Level 27, 525 Collins Street
Rialto South Tower
Melbourne 3000
Australia
T: 61 3 9935 2916
F: 61 3 9935 2750
E: melbourne@citixsys.com

India - New Delhi

A-24/5, MCIE
Mathura Road
New Delhi 110044
India
T: 91 11 42696666
F: 91 11 42696600
E: newdelhi@citixsys.com

Canada - Toronto

8th Floor
2425 Matheson Blvd. East
Mississauga, ON L4W 5K4
Canada
T: 1 905 361 2886
F: 1 905 361 6401
E: toronto@citixsys.com

Asia Pacific - Perth

Level 29, Forrest Centre
221 St Georges Tce
Perth WA 6000
Australia
T: 61 8 9288 0662
F: 61 8 9481 3177
E: perth@citixsys.com

www.citixsys.com